

A modern, multi-story glass office building with a large tree logo on its facade. The building is surrounded by lush greenery and palm trees. The sky is blue with some clouds.

INTEGRA-IA

Unified Integration & Automation
Platform for Enterprises.

“Innovation is
the new currency
of *efficiency*.”

We architect intelligent ERP solutions that track,
manage, and optimize your enterprise assets
with absolute precision.

ESTABLISHED EXCELLENCE

25+ Years of
Engineering Trust.

Project Overview

The system enhances efficiency through seamless equipment tracking and real-time data accessibility for informed decisions. It is a centralized system designed to track, control, and manage all company **Equipment and Assets, Manpower, Inventory** throughout their lifecycle. This includes Issuing and returning equipment, Transfers between sites or departments, Maintenance and repairs, Fuel usage Compliance renewals, Final disposal or scrapping.

Core modules

- Fleet
- Asset
- Inventory
- Workforce
- Interfaces



Fleet maintenance refers to the process of overseeing and coordinating equipment's to ensure efficient, safe and cost-effective operations. It includes vehicle acquisition, maintenance, fuel utilization, driver supervision regulatory compliance, and performance tracking. Effective fleet management helps organizations reduce operating costs, improve productivity, enhance safety and extend the lifespan of fleet assets.

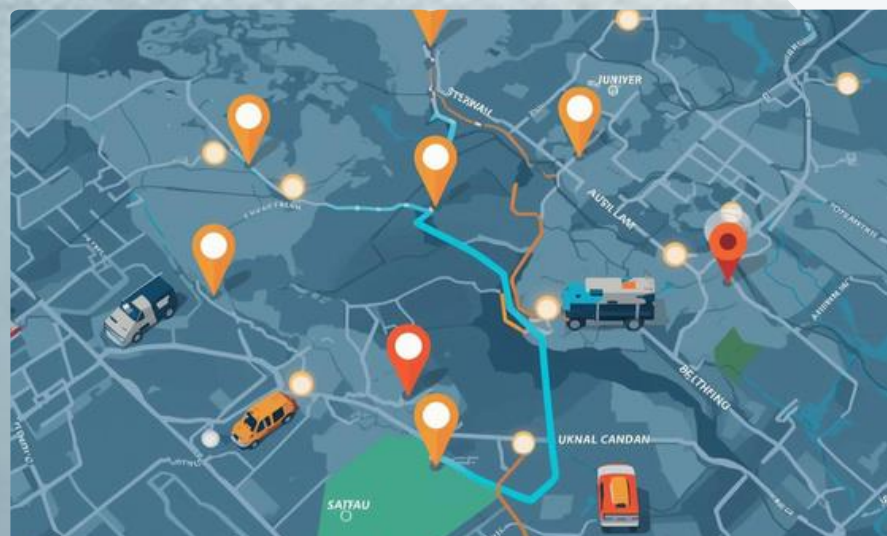


Utilization

Digital utilization process that uses QR codes to capture equipment usage, enables daily tracking of vehicles and machinery and supports accurate project costing. The system provides idle vehicle and idle day analysis, along with comprehensive dashboards and reports to improve visibility, control costs, and optimize asset utilization.

Fuel Utilization

QR-code enabled fuel filling that captures and uploads fuel details for each vehicle, tracks real-time consumption, and identifies abnormal usage to detect leaks, theft, or mechanical issues. The solution supports site fuel estimation for cost control and streamlines fleet card bill processing with accurate item mapping.



Vehicle tracking

An advanced fleet tracking solution that provides real-time vehicle location visibility, geofencing alerts, and driver behavior monitoring for safer operations. The system records complete trip history with route playback and delivers detailed analytics on usage, performance, fuel consumption and downtime to support data-driven decision-making.



Fleet Maintenance

Streamlined maintenance system that schedules repairs based on issue severity, records repair details, and estimates completion time. It enables assignment of technicians or external service providers through job cards, ensuring all tasks, parts and costs are properly documented. The system also integrates with spare parts inventory to ensure timely availability and minimize vehicle downtime.

RTA Renewals

Centralized renewal process that tracks expiry dates for vehicle registrations, fitness certificates, licenses, and insurance policies. It sends automated alerts and reminders ahead of renewal deadlines, securely stores related documents and provides a live dashboard showing active, due soon, and overdue vehicle statuses for complete compliance visibility.



Vehicle Lifecycle

Vehicle lifecycle supports declaring scrap or surplus assets, recording disposal activities, and tracking theft incidents. It also manages internal vehicle transfers and enables initiation and monitoring of transfer requests to ensure full control and accountability.

Hire vehicle operations

System enables creation and approval of work orders, tracks vehicle usage and payments, manages un-hire processes, and ensures seamless coordination with vendors for efficient operations.



A comprehensive asset management framework that covers vehicles and movable equipment, IT and digital assets, office and facility resources, and inter-office shared assets. It also includes land buildings, and specialized assets to ensure complete visibility, control, and efficient utilization across the organization.



IT & Digital

Asset tracking software helps organizations track, monitor, and control IT and digital assets such as hardware, software licenses, cloud subscriptions and network equipment. It provides real-time visibility into asset location, usage, lifecycle status, and compliance, enabling better cost control security management, and timely renewals or upgrades.

Land and Buildings

solution that provides complete visibility and control over land and building assets by tracking ownership, usage, maintenance, and compliance in one centralized platform for efficient and informed decision-making.





Inter office & shared

Centralized inter-office asset system that records and tracks all shared resources, including laptops, monitors, projectors, tools, vehicles, and common equipment. It enables easy allocation, booking and monitoring of asset usage to improve visibility, prevent conflicts and maximize utilization across locations.

Facilities

Office and facility asset focuses on tracking and maintaining workplace resources such as furniture, printers, HVAC systems, lighting, security equipment and building infrastructure. The system helps monitor asset condition, schedule maintenance, manage space utilization, and ensure efficient operations across offices and facilities.



Software & license

Focuses on tracking all applications, operating systems, subscriptions and digital licenses used across the organization. The system monitors license validity, usage, renewals, and compliance to prevent over-licensing or unauthorized use. It helps optimize software costs, ensures regulatory compliance, and provides visibility into installed and unused applications.

Our Inventory system is an end-to-end digital solution designed to streamline material handling and tracking and reporting across projects and warehouses. The system enables real-time visibility, control and automation of inventory operations, ensuring accuracy, accountability and operational efficiency.



Material Inward

Systematic process of receiving and recording incoming goods at a facility. It includes verification of vendor and purchase order details, weight measurement where applicable, quality checks and GRN generation. Once approved, the inventory is automatically updated, ensuring accurate stock records and smooth supply chain operations.

Material Reservation

Material reservation is the process of allocating and earmarking inventory for specific orders or projects. It ensures that required materials are set aside in advance, preventing stock shortages and delays. This improves planning accuracy, enhances operational efficiency and guarantees material availability when needed.





QR-Based Issuance

streamline material distribution by enabling quick scanning of QR codes on items or storage locations. This ensures accurate identification, real-time system updates, and complete traceability. The process reduces manual errors, improves operational speed, and enhances inventory control.

Material Issue to Subcontractor

Material issue to subcontractor involves controlled and documented release of materials for outsourced work. Each issuance is recorded against specific jobs or work orders, ensuring accountability, accurate tracking, and compliance with project requirements. This process improves transparency, reduces material loss, and supports timely project execution.



Material Movement

Systematic transfer of materials within or between locations such as warehouses or project sites. Each movement is tracked and recorded to ensure visibility, accurate inventory updates and smooth operations. This process enhances control, reduces handling errors and supports efficient workflow management.

HRMS automates and streamlines end-to-end human resource processes, including recruitment, employee self-service, attendance tracking, transfers, payroll readiness and full & final settlements. It enables digital approvals, real-time data updates and centralized reporting through dashboards and analytics. This improves efficiency, transparency and decision-making across all HR operations.



Recruitment

streamlines the complete hiring process from manpower requisition to candidate onboarding. It enables job posting, application tracking, shortlisting, interview scheduling and selection through a centralized platform. This ensures faster hiring, improved candidate experience, and better decision-making.

Employee Self-Service

Manage their own HR activities, including leave requests, approvals, attendance tracking and personal information updates. It provides a user-friendly platform for real-time access improving transparency, reducing HR workload and enhancing employee engagement.



Attendance

Automates the tracking of employee working hours through biometric devices, mobile apps or system logins. It ensures accurate attendance records, real-time monitoring and seamless integration with leave and payroll systems, improving efficiency and compliance.

HR Operations

Manages overtime tracking, duty hour allocation and payroll readiness through a centralized system. It ensures accurate recording of work hours, fair distribution of duties and seamless payroll processing, improving efficiency, compliance, and workforce productivity.



Employee Transfers

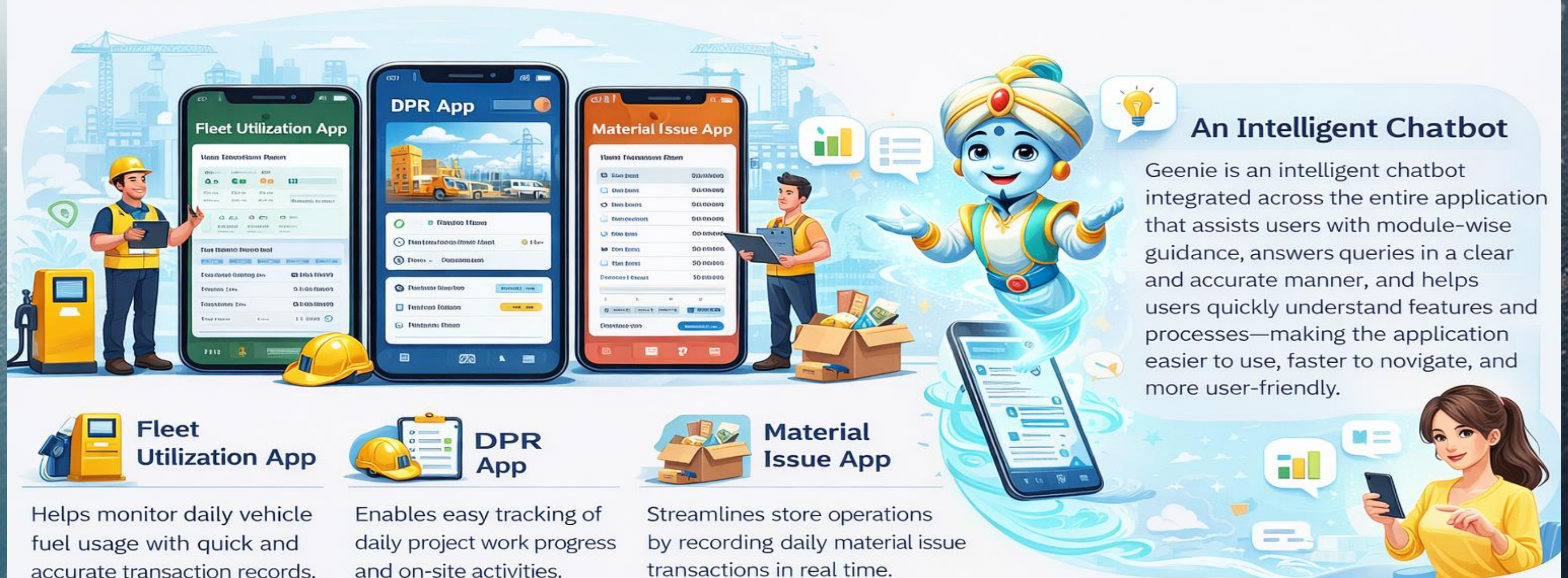
streamlines site-to-site transfers through a structured approval workflow. It enables transfer requests, HR approvals and automated generation of transfer documents. This ensures transparency, proper tracking and smooth relocation of employees across sites.

Full & Final Settlement

Manages the complete employee exit process, including resignation handling, no-dues clearance, and final settlement calculations. It ensures accurate payout processing, compliance with policies and timely generation of relieving documents, providing a smooth and transparent exit experience.




Our mobile application suite is designed to simplify day-to-day operational tracking through three focused apps; the **Fleet Utilization App** helps monitor daily vehicle fuel usage with quick and accurate transaction records, the **DPR App** enables easy tracking of daily project work progress and on-site activities, and the **Material Issue App** streamlines store operations by recording daily material issue transactions in real time—ensuring better control, transparency, and efficient decision-making across operations.




An Intelligent Chatbot

Geenie is an intelligent chatbot integrated across the entire application that assists users with module-wise guidance, answers queries in a clear and accurate manner, and helps users quickly understand features and processes—making the application easier to use, faster to navigate, and more user-friendly.




Fleet Utilization App

Helps monitor daily vehicle fuel usage with quick and accurate transaction records.



DPR App

Enables easy tracking of daily project work progress and on-site activities.



Material Issue App

Streamlines store operations by recording daily material issue transactions in real time.

Thank You Interactive Data Systems Ltd.

Empowering Operations Through Intelligent Tracking Solutions

📍 **Address:** [Balapur Mandal, TSIIC, Hardware Park, Plot No 39, Phase II, Shamshabad, Mamidpally, Hyderabad, Telangana 500005]

☎ **Contact:** [8008655231]

🌐 **Website:** [<https://idslinfo.com/web/>]

✉ **Email:** [subhash@idslinfo.com]

Thank you for your time and attention!

We look forward to partnering with you to transform the way you manage your equipment, fuel, and workforce.